



Located in the vicinity of door 4L.

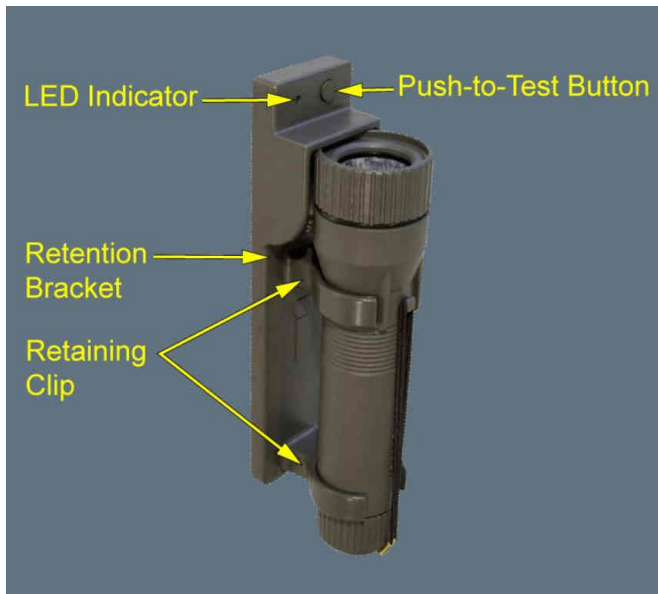
Content:

- Liquid soap (Bactimain)
- Antibacterial spray (Bactinyl)
- Protective glasses
- Face shields

FLASHLIGHT

The aircraft is equipped with handheld flashlights stored in a bracket. The flashlights are located at all cabin crew and flight crew stations.

Flashlight



DESCRIPTION OF THE FLASHLIGHT AND THE BATTERY MONITORING SYSTEM

FLASHLIGHT

The flashlight has white Light Emitting Diodes (LEDs) for the spot.
To activate the flashlight remove it from the retention bracket.

BATTERY MONITORING SYSTEM

The retention bracket contains battery monitoring system to test the condition of the battery pack.

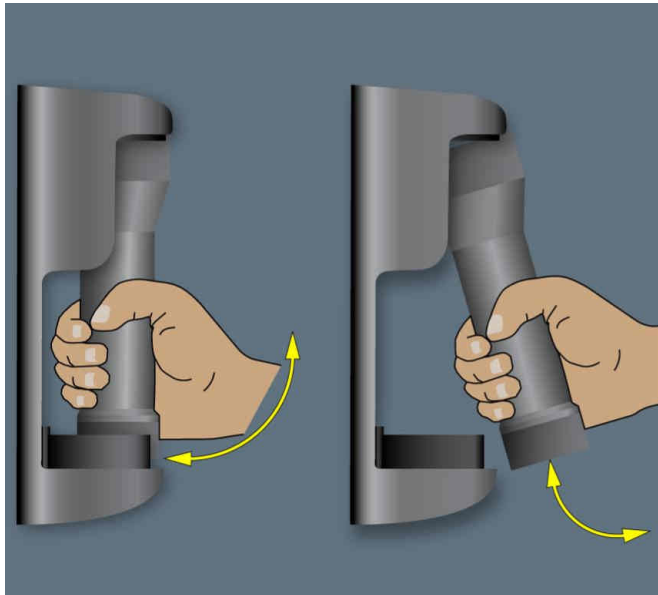
TEST OF THE BATTERY PACK

Push the Pust-to-Test pb-sw while the flashlight is inserted in the retention bracket:

- a green LED indicates a normal battery level
- a red flashing LED indicates a battery replacement.

OPERATION OF THE FLASHLIGHT

1. Removing the flashlight out of its bracket:
 - a. Hold the body of the flashlight.
 - b. Pull it from the retaining clip of the bracket.
2. The flashlight is activated when the flashlight is removed from the retention bracket.
3. Inserting the flashlight in its bracket:
 - a. Hold the flashlight.
 - b. Push the body of the flashlight into the bracket.
4. The flashlight is deactivated when the flashlight is moved into the retention bracket.

How to Release the Flashlight from its Stowed Position**FIRE FIGHTING GLOVES**

Fire Fighting Gloves are on board the aircraft to provide a crew member with protection against heat and fire.